

LESSON 41

Pascal Lawrynowicz

Exercise 1

Exercise 1 consists of two staves of music in 4/4 time. The first staff contains measures 1 through 4, and the second staff contains measures 5 through 8. The music features eighth-note patterns with various rests and accents. Measure numbers 2, 3, and 4 are indicated above the first staff, and 5, 6, 7, and 8 are indicated above the second staff.

Exercise 2

Exercise 2 consists of two staves of music in 4/4 time. The first staff contains measures 1 through 4, and the second staff contains measures 5 through 8. The music features eighth-note patterns with various rests and accents. Measure numbers 2, 3, and 4 are indicated above the first staff, and 5, 6, 7, and 8 are indicated above the second staff.

Exercise 3

Exercise 3 consists of two staves of music in 4/4 time. The first staff contains measures 1 through 4, and the second staff contains measures 5 through 8. The music features eighth-note patterns with various rests and accents. Measure numbers 2, 3, and 4 are indicated above the first staff, and 5, 6, 7, and 8 are indicated above the second staff.

Exercise 4

Exercise 4 consists of two staves of music in 4/4 time. The first staff contains measures 1 through 4, and the second staff contains measures 5 through 8. The music features eighth-note patterns with various rests and accents. Measure numbers 2, 3, and 4 are indicated above the first staff, and 5, 6, 7, and 8 are indicated above the second staff.

Exercise 5

Exercise 5 consists of two staves of music in 4/4 time. The first staff contains measures 1 through 4, and the second staff contains measures 5 through 8. The music features eighth-note patterns with various rests and accents. Measure numbers 2, 3, and 4 are indicated above the first staff, and 5, 6, 7, and 8 are indicated above the second staff.

Exercise 6

Exercise 6 consists of two staves of music in 4/4 time. The first staff contains measures 1 through 4, and the second staff contains measures 5 through 8. The music features eighth-note patterns with various rests and accents. Measure numbers 2, 3, and 4 are indicated above the first staff, and 5, 6, 7, and 8 are indicated above the second staff.

Exercise 7

Musical notation for Exercise 7, measures 1-8. The exercise is in 4/4 time. Measures 1-4 contain eighth-note patterns with accents and slurs, with fingerings 2, 3, and 4 indicated. Measures 5-8 continue the pattern with slurs and accents, ending with a double bar line.

Exercise 8

Musical notation for Exercise 8, measures 1-8. The exercise is in 4/4 time. Measures 1-4 contain eighth-note patterns with accents and slurs, with fingerings 2, 3, and 4 indicated. Measures 5-8 continue the pattern with slurs and accents, ending with a double bar line.

Exercise 9

Musical notation for Exercise 9, measures 1-8. The exercise is in 4/4 time. Measures 1-4 contain eighth-note patterns with accents and slurs, with fingerings 2, 3, and 4 indicated. Measures 5-8 continue the pattern with slurs and accents, ending with a double bar line.

Exercise 10

Musical notation for Exercise 10, measures 1-8. The exercise is in 4/4 time. Measures 1-4 contain eighth-note patterns with accents and slurs, with fingerings 2, 3, and 4 indicated. Measures 5-8 continue the pattern with slurs and accents, ending with a double bar line.

Exercise 11

Musical notation for Exercise 11, measures 1-8. The exercise is in 4/4 time. Measures 1-4 contain eighth-note patterns with accents and slurs, with fingerings 2, 3, and 4 indicated. Measures 5-8 continue the pattern with slurs and accents, ending with a double bar line.

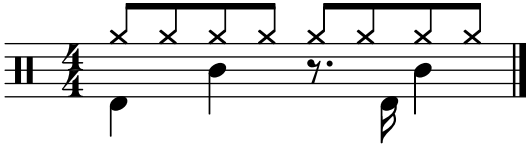
Exercise 12

Musical notation for Exercise 12, measures 1-8. The exercise is in 4/4 time. Measures 1-4 contain eighth-note patterns with accents and slurs, with fingerings 2, 3, and 4 indicated. Measures 5-8 continue the pattern with slurs and accents, ending with a double bar line.

Pattern 1



Pattern 2



Pattern 3



Pattern 4

