

# LESSON 42

Pascal Lawrynowicz

## Exercise 1

Exercise 1 consists of two staves of music in 4/4 time. The first staff contains measures 1 through 4, and the second staff contains measures 5 through 8. The melody is composed of eighth and sixteenth notes, with various rests and accents. Measure numbers 2, 3, and 4 are indicated above the first staff, and 5, 6, 7, and 8 are indicated above the second staff.

## Exercise 2

Exercise 2 consists of two staves of music in 4/4 time. The first staff contains measures 1 through 4, and the second staff contains measures 5 through 8. The melody is composed of eighth and sixteenth notes, with various rests and accents. Measure numbers 2, 3, and 4 are indicated above the first staff, and 5, 6, 7, and 8 are indicated above the second staff.

## Exercise 3

Exercise 3 consists of two staves of music in 4/4 time. The first staff contains measures 1 through 4, and the second staff contains measures 5 through 8. The melody is composed of eighth and sixteenth notes, with various rests and accents. Measure numbers 2, 3, and 4 are indicated above the first staff, and 5, 6, 7, and 8 are indicated above the second staff.

## Exercise 4

Exercise 4 consists of two staves of music in 4/4 time. The first staff contains measures 1 through 4, and the second staff contains measures 5 through 8. The melody is composed of eighth and sixteenth notes, with various rests and accents. Measure numbers 2, 3, and 4 are indicated above the first staff, and 5, 6, 7, and 8 are indicated above the second staff.

## Exercise 5

Exercise 5 consists of two staves of music in 4/4 time. The first staff contains measures 1 through 4, and the second staff contains measures 5 through 8. The melody is composed of eighth and sixteenth notes, with various rests and accents. Measure numbers 2, 3, and 4 are indicated above the first staff, and 5, 6, 7, and 8 are indicated above the second staff.

## Exercise 6

Exercise 6 consists of two staves of music in 4/4 time. The first staff contains measures 1 through 4, and the second staff contains measures 5 through 8. The melody is composed of eighth and sixteenth notes, with various rests and accents. Measure numbers 2, 3, and 4 are indicated above the first staff, and 5, 6, 7, and 8 are indicated above the second staff.

Exercise 7

Musical notation for Exercise 7, measures 1-8. The exercise is in 4/4 time. Measures 1-4 contain eighth-note patterns with accents and slurs, including triplets. Measures 5-8 continue the patterns with various rhythmic values and accents.

Exercise 8

Musical notation for Exercise 8, measures 1-8. The exercise is in 4/4 time. Measures 1-4 feature eighth-note patterns with accents and slurs, including triplets. Measures 5-8 continue the patterns with various rhythmic values and accents.

Exercise 9

Musical notation for Exercise 9, measures 1-8. The exercise is in 4/4 time. Measures 1-4 contain eighth-note patterns with accents and slurs, including triplets. Measures 5-8 continue the patterns with various rhythmic values and accents.

Exercise 10

Musical notation for Exercise 10, measures 1-8. The exercise is in 4/4 time. Measures 1-4 contain eighth-note patterns with accents and slurs, including triplets. Measures 5-8 continue the patterns with various rhythmic values and accents.

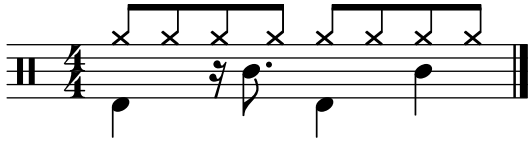
Exercise 11

Musical notation for Exercise 11, measures 1-8. The exercise is in 4/4 time. Measures 1-4 contain eighth-note patterns with accents and slurs, including triplets. Measures 5-8 continue the patterns with various rhythmic values and accents.

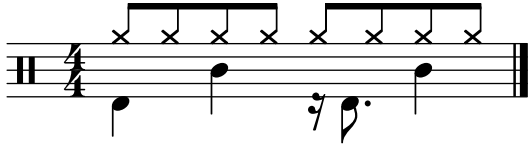
Exercise 12

Musical notation for Exercise 12, measures 1-8. The exercise is in 4/4 time. Measures 1-4 contain eighth-note patterns with accents and slurs, including triplets. Measures 5-8 continue the patterns with various rhythmic values and accents.

Pattern 1



Pattern 2



Pattern 3



Pattern 4

